

# 1. Table of Contents (This Page)

Created on Wed May 27 12:34:53 2015

2. top

3. ground

4. signal

5. power

6. bottom

7. outline

8. plated-drill

9. unplated-drill

10. componentmask

11. soldermask

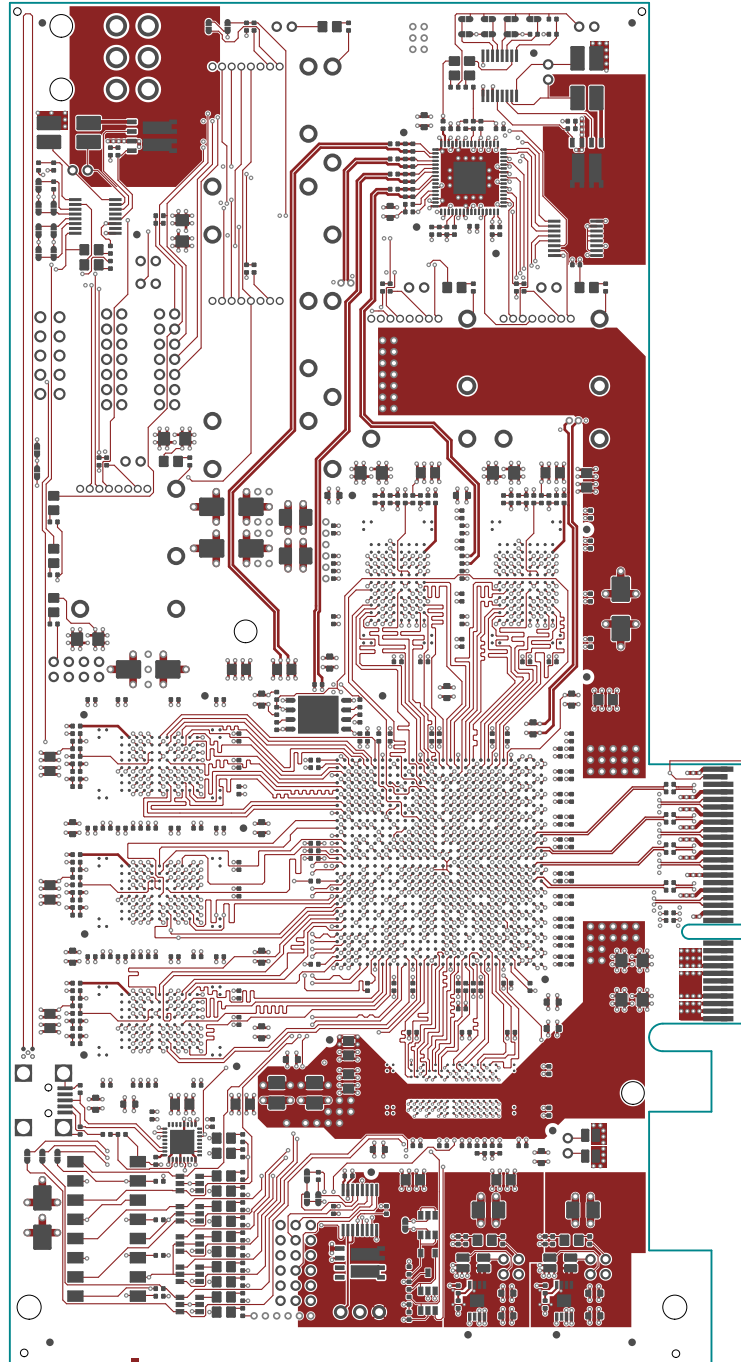
12. topsilk

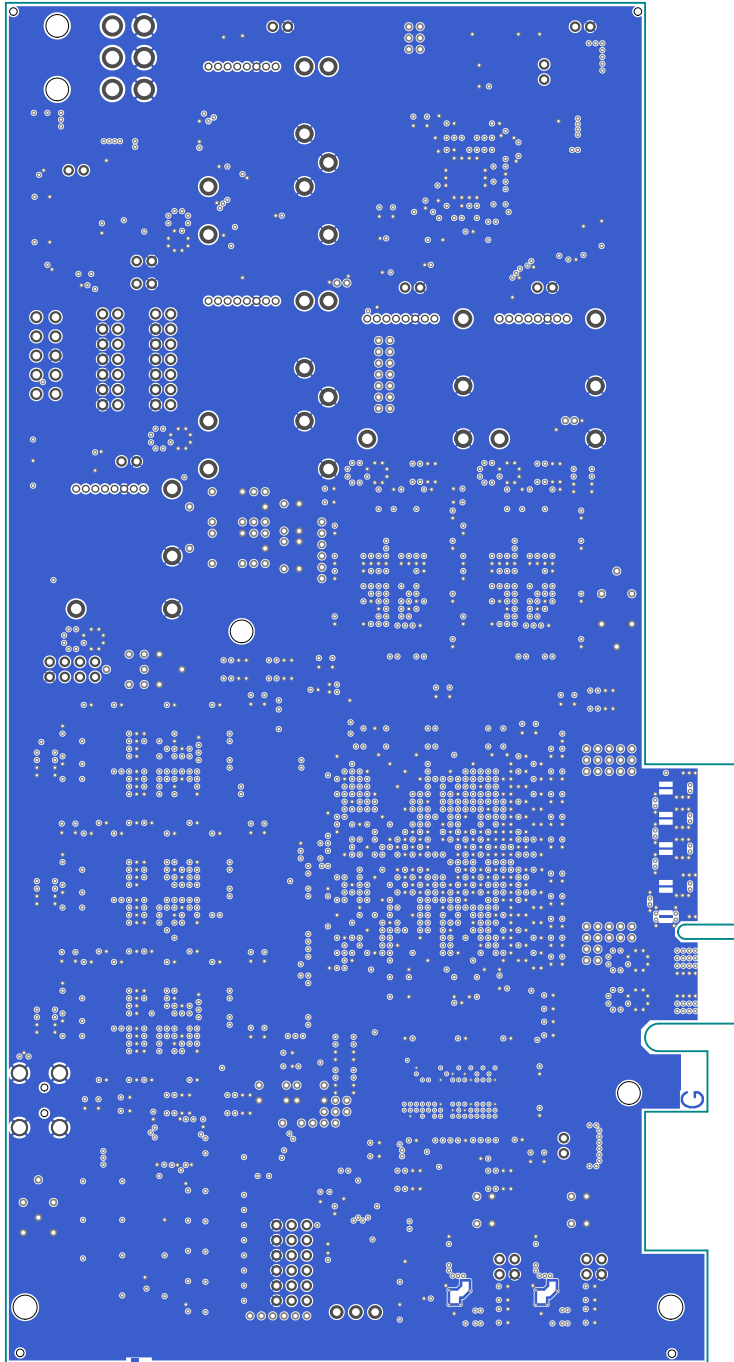
13. bottomsilk

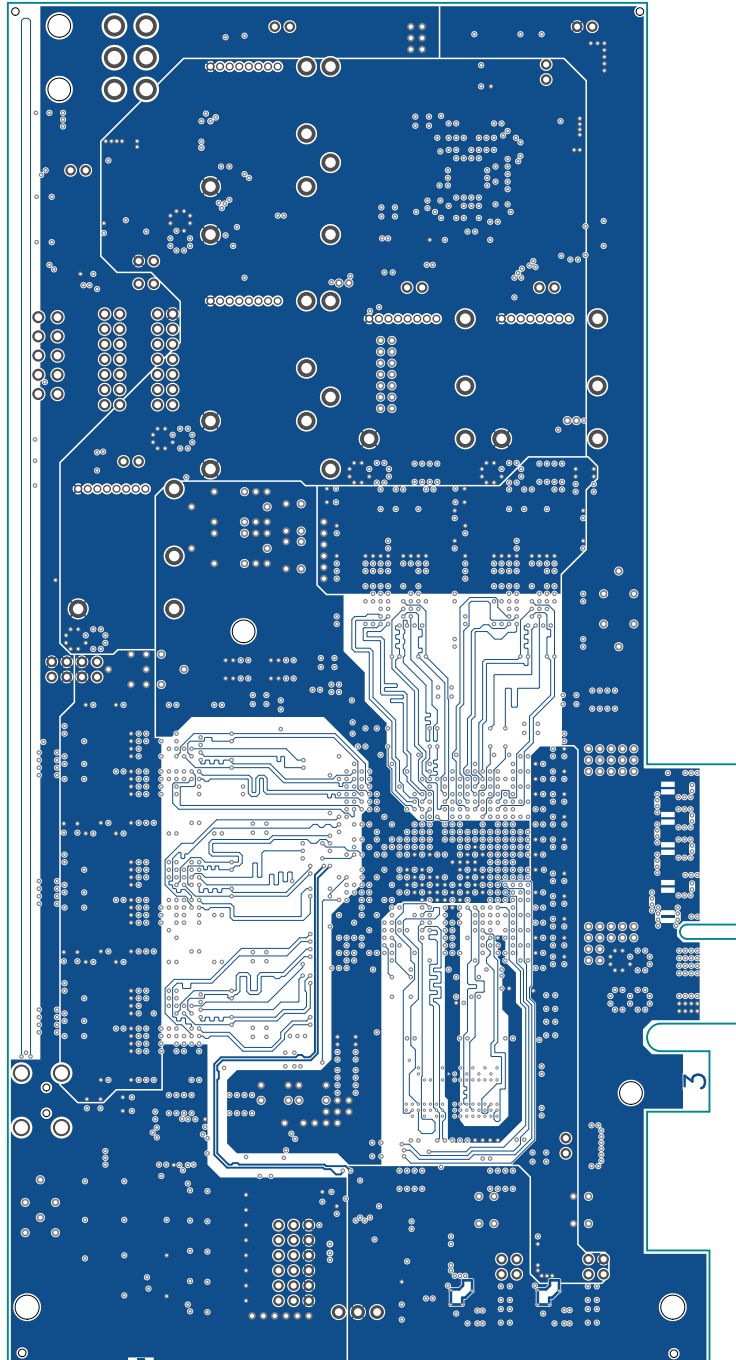
14. toppaste

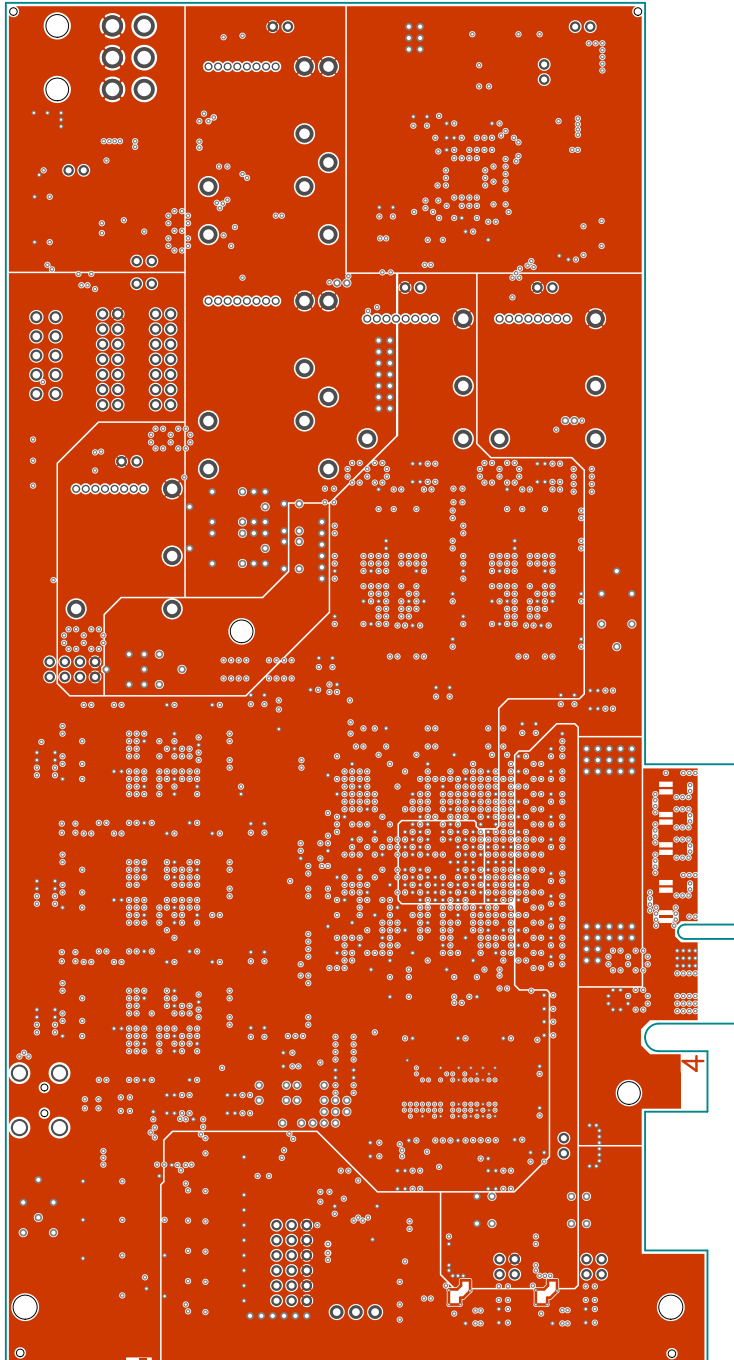
15. topassembly

16. bottomassembly

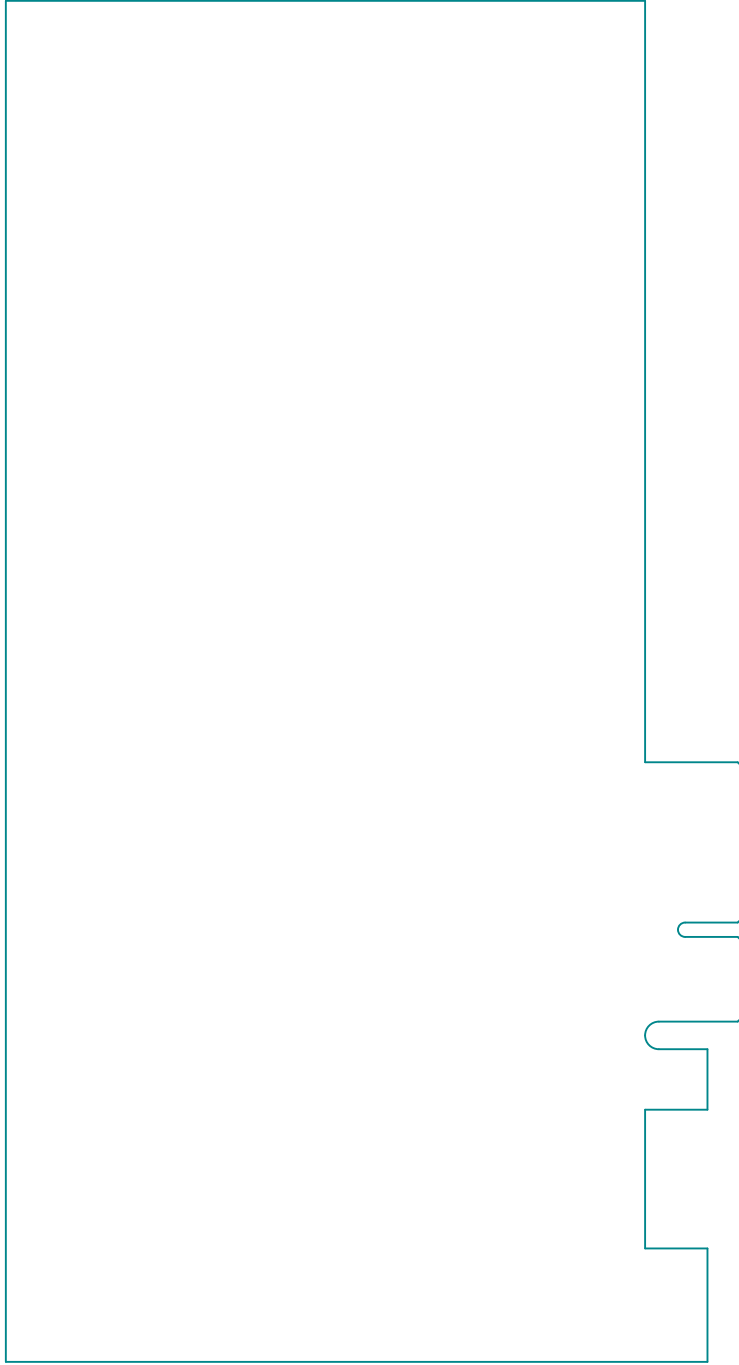


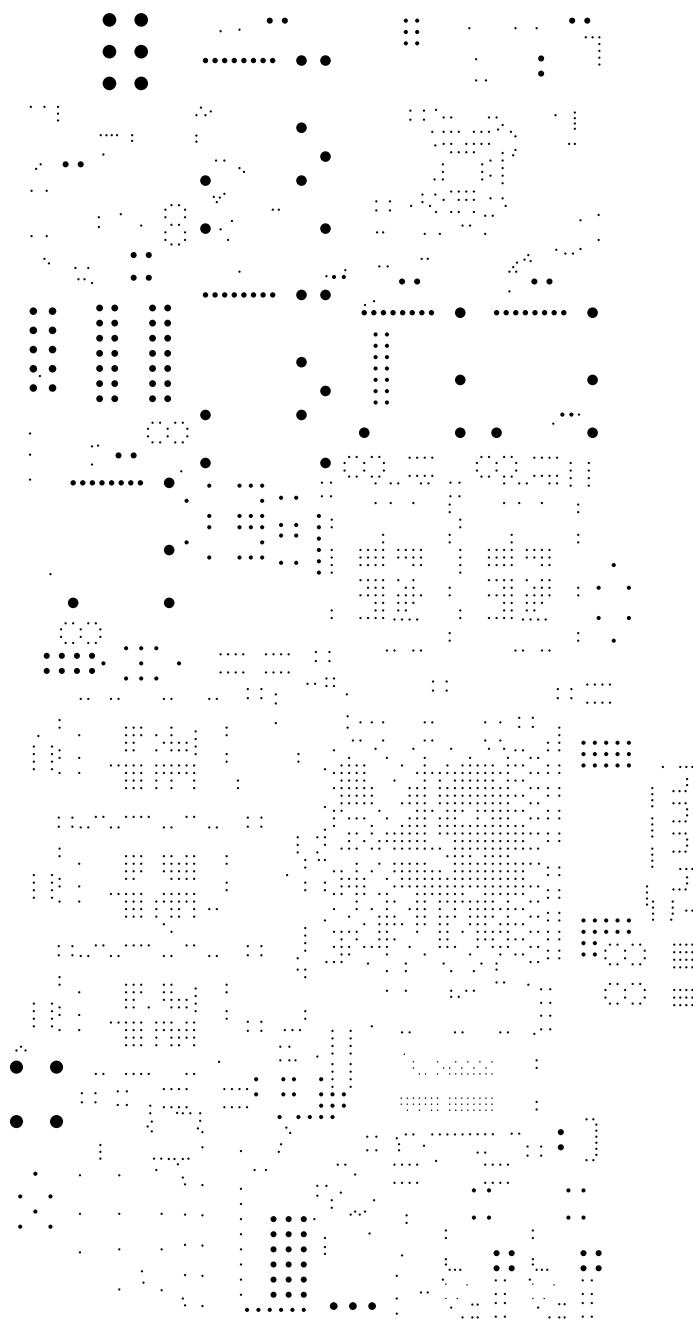




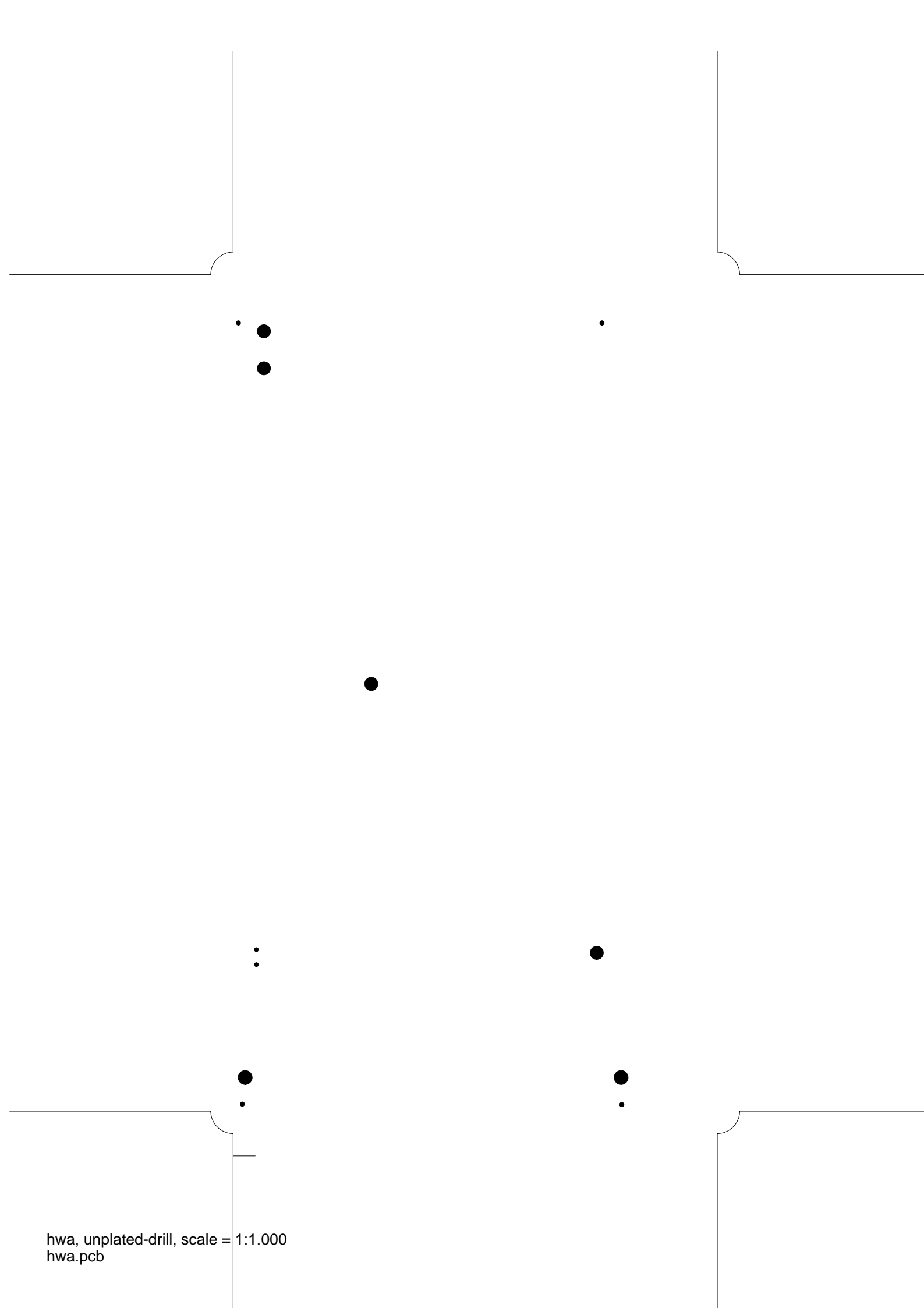




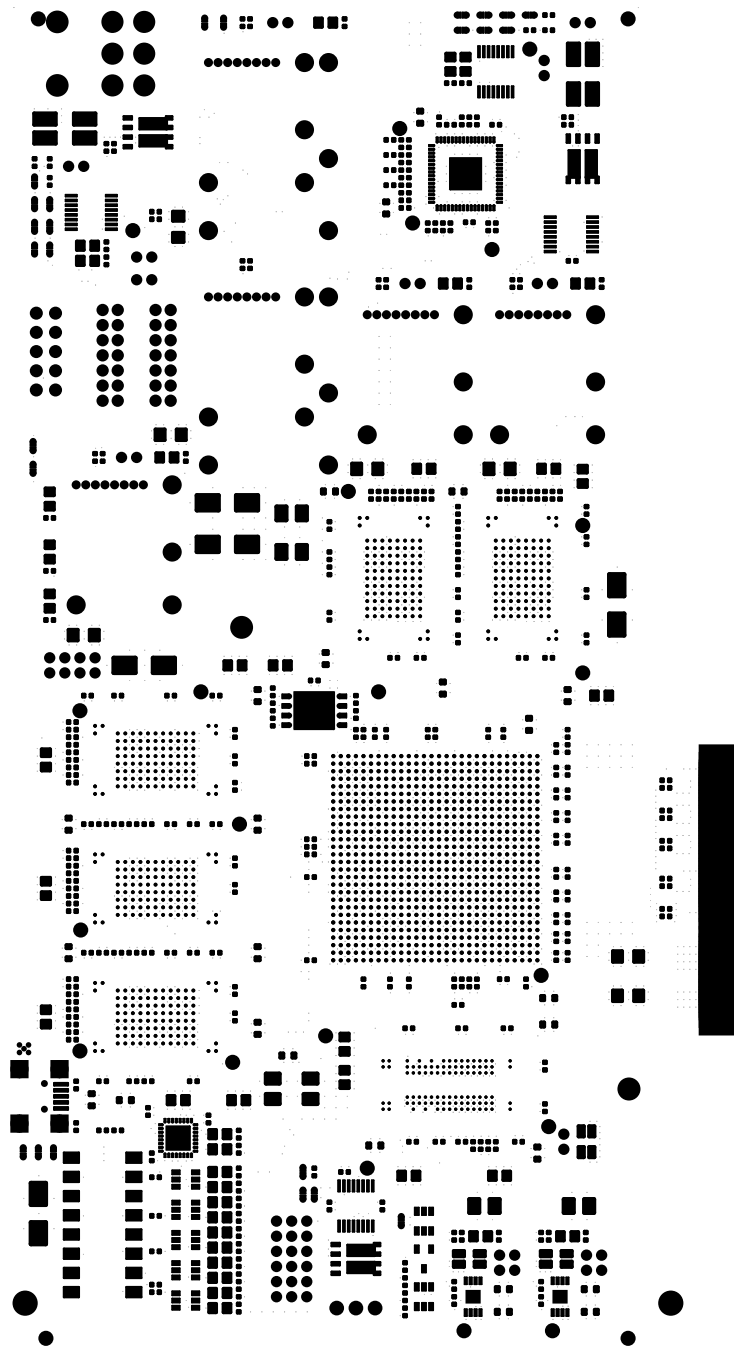


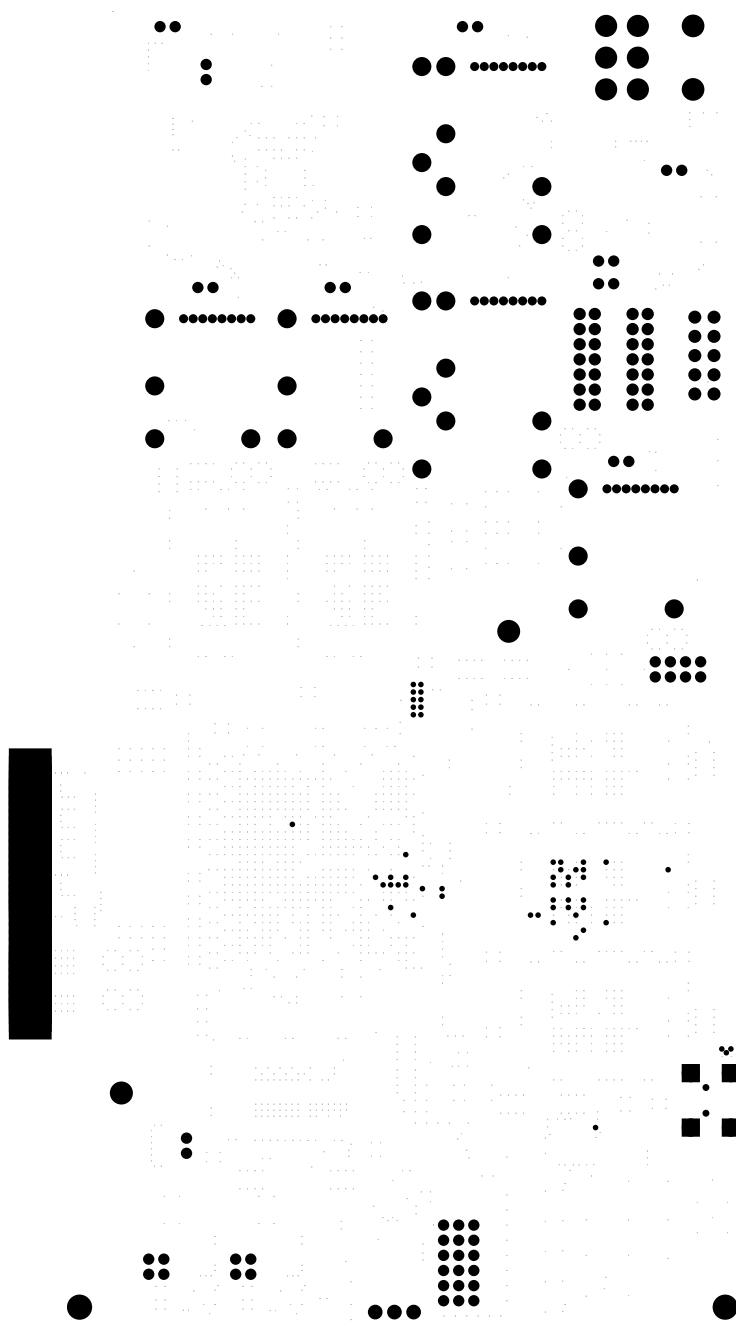




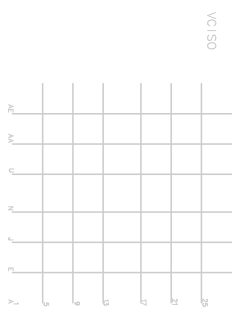


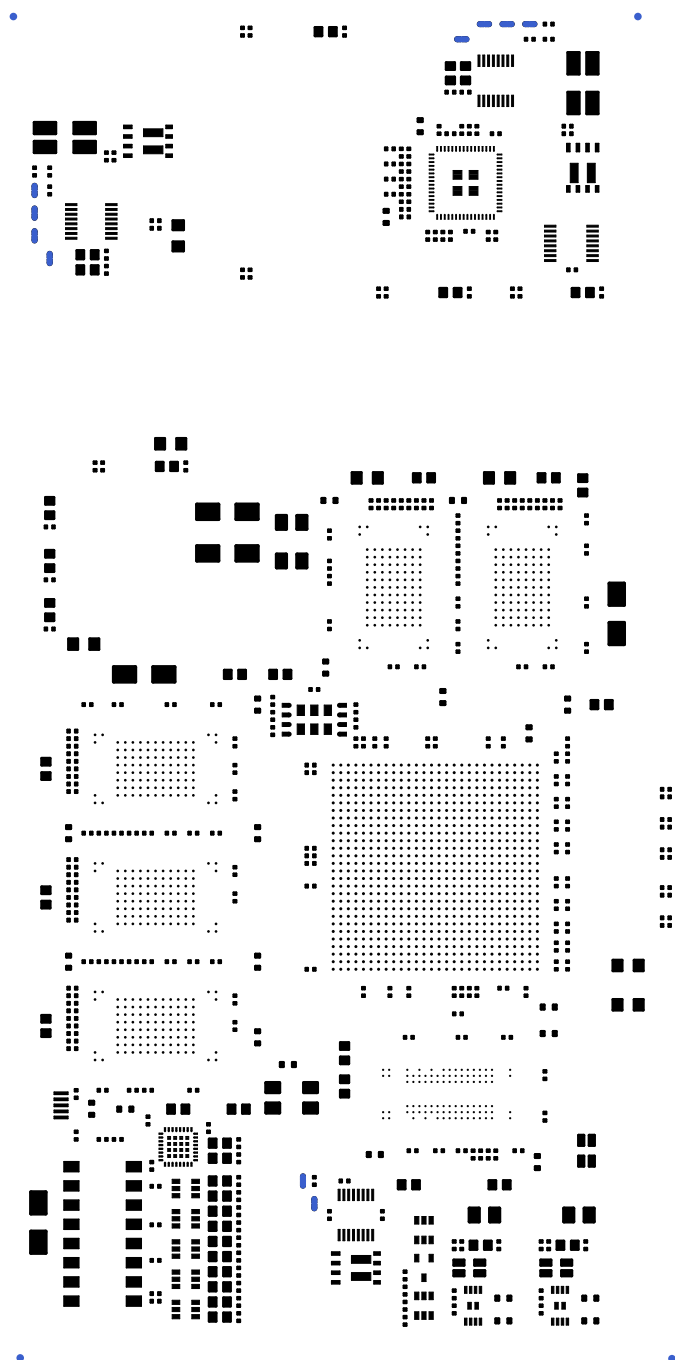
hwa, unplated-drill, scale = 1:1.000  
hwa.pcb

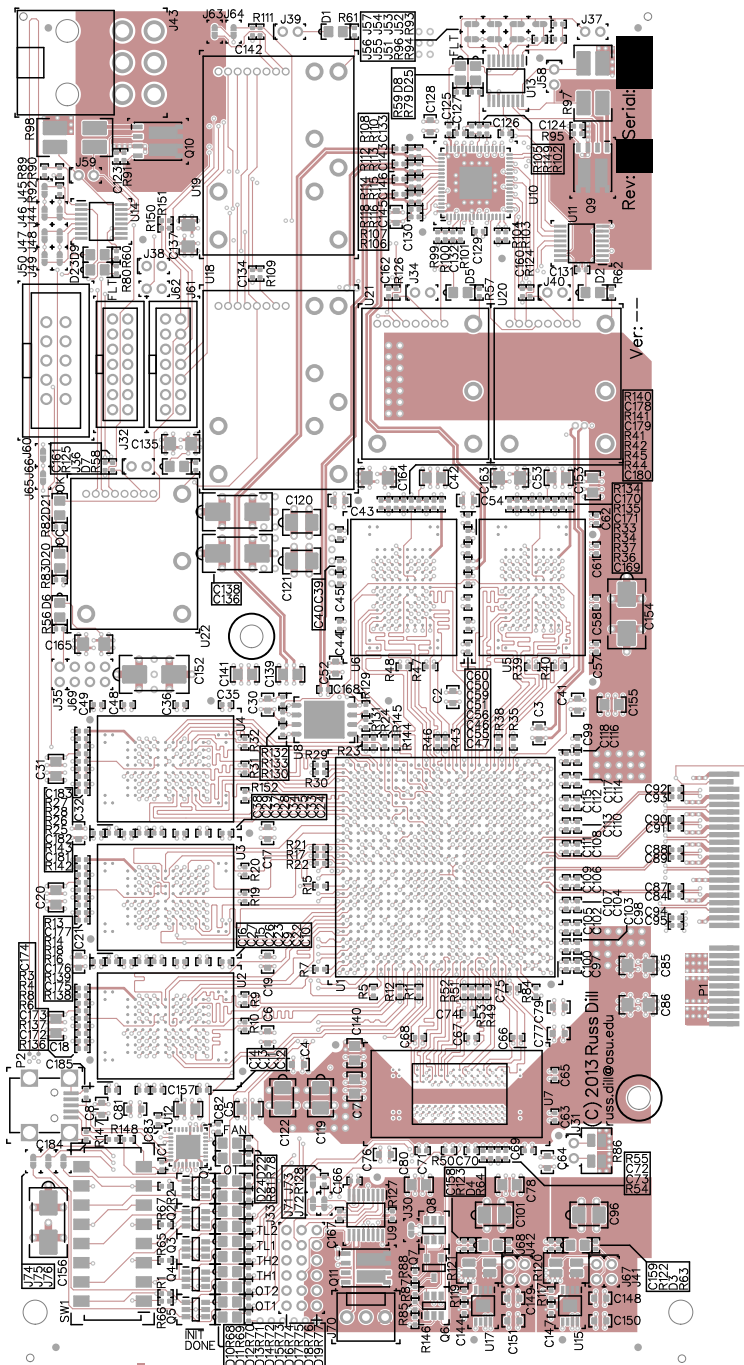


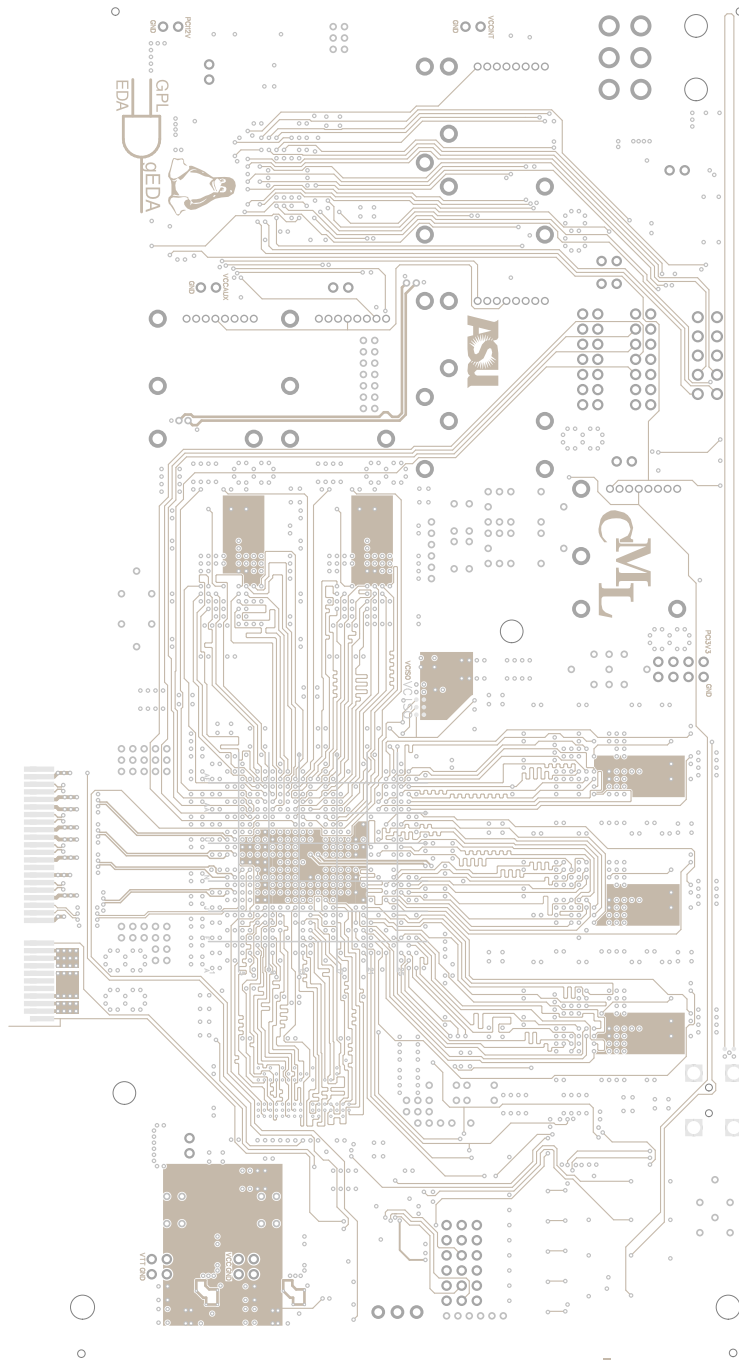












hwa, bottomassembly (mirrored), scale = 1:1.000  
hwa.pcb



There are 14 different drill sizes used in this layout, 2200 holes total

Symbol	Diam. (inch)	Count	Plated?
γ	0.008	74	YES
+	0.012	1801	YES
×	0.022	140	YES
•	0.028	40	YES
□	0.031	54	YES
▽	0.035	28	YES
#	0.036	2	NO
⌘	0.039	4	NO
⊙	0.039	10	YES
▣	0.040	3	YES
⦿	0.055	28	YES
⦿	0.068	4	YES
⦿	0.071	6	YES
⦿	0.118	4	NO
⦿	0.126	2	NO

Title: hwa – Fabrication Drawing  
Author: Russ Dill  
Date: Wed 27 May 2015 07:34:54 PM GMT UTC

